



TRIDONIC LED COOLING

TALEXXmodule SLE series COB LED modules

GEN1 SUNSET - 11, 15 mm

GEN5 Excite - Advanced 06, 11, 15, 19, 23 mm

GEN6 Advanced / SNC / TINGE / FOOD / FASHION / ART

- Validated Thermal Designs
- Adaptable to your Needs
- Functional & Aesthetic

TRIDONIC

MTx
MechaTronix

An introduction

MechaTronix was formed in 2007, comprised of five already successful manufacturing companies, with each of them in excess of a decade of continuous operation. MechaTronix provides a wide variety of mechanical and electromechanical parts as well as assemblies for the international Original Equipment Manufacturers market.

Starting off with the production of metal and plastic enclosures for electronic applications and the assembly of half-products and elaborate cables, MechaTronix utilised several production processes, amongst which die casting, forging, extrusion and plastic injection.

The application of secondary processes such as CNC grinding and cutting and finishing such as anodising, painting and silk screen printing enable us to offer a very high degree of customisation and personalisation to our customers.

It was through the expertise in these processes that MechaTronix found its stride as a serious contender in the market of heat sinks and cooling engines. What started as a one-off venture into the extrusion of aluminium heat sinks resulted in a very comprehensive package of cooling solutions for the booming international LED market.

Nowadays, MechaTronix is the preferred cooling partner for world leading LED manufacturers like Tridonic, with an offering of heat sinks and cooling solutions for every conceivable LED application. To service the international markets and meet the exploding demand for its products, MechaTronix formed an international distribution group. Through these localised professional partners, MechaTronix' products are readily available all over the world.

OUR PROCESS STARTS WITH LISTENING



Mastering LED Cooling

With the evolution of LED lighting over the last years, the demand for professional thermal solutions has grown exponentially. And now that we no longer remain in the realm of low power LED's, thermal management becomes a critical factor within LED fixtures. To that end, MechaTronix has developed several series of pin-fin and star heat sinks, manufactured through die casting, forging or extrusion. This has resulted in a comprehensive range of more than 400 off-the-shelf available LED coolers, for passive or active heat dissipation.

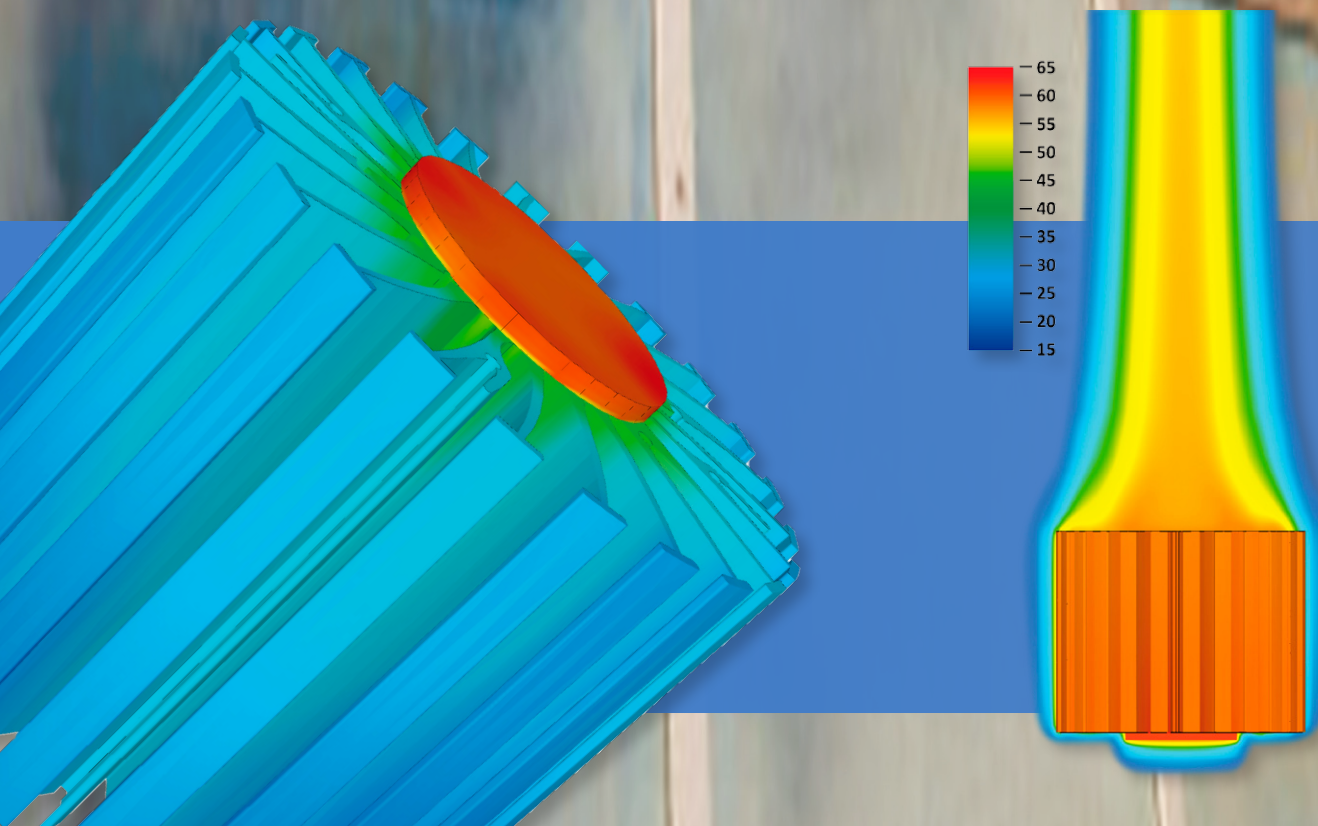
After initial reservations concerning active LED coolers, specialists have found that there really is no better option, when closing in on the 8000 lumen mark. Admittedly, the fan's lifespan becomes somewhat of a focal point in the application of an active LED cooler, but given that the lifespan of the LED engine itself dramatically decreases at high temperatures, the lifespan of the fan looks rather favourable all of a sudden.

MechaTronix' ground breaking ModuLED coolers and its actively cooled sibling IceLED have garnered a lot of attention and positive reviews in the LED market. ModuLED and IceLED are just precursors of a complete range of dedicated and highly effective LED coolers for professional deployment in spotlights, downlights, high bays and a further score of architectural and utility LED applications.

Both ModuLED and IceLED, as well as their upcoming descendants are Zhaga-ready and have a matrix of mounting holes that allows for very easy attachment of a great number of various Tridonic LED modules. Simply apply a thermal interface of your choice, put the LED engine in place and fasten with self-tapping screws and you are good to go! No drilling, customisation or special mounting brackets are needed.

Thanks to an extremely thorough thermal verification of all heat sink lines, MechaTronix provides total thermal disclosure for each model, coupled with all Tridonic Talexx Stark LED COB's and engines. All thermal data is available in the product specifications, that come with every MechaTronix heat sink. In this way, engineers save time and effort during the design stage of their LED fixture and will significantly shorten their time to market.

OUR PROCESS STARTS WITH LISTENING



TRIDONIC LED COOLING

TALEXXmodule SLE series COB LED modules

GEN1 SUNSET - 11, 15 mm

GEN5 Excite - Advanced 06, 11, 15, 19, 23 mm

GEN6 Advanced / SNC / TINGE / FOOD / FASHION / ART

LPF3550-ZHC



Tridonic LED Pin Fin cooler
ø35mm - h50mm - Rth 7.41°C/W
Cooling performance 300 - 1,000 lm

Direct mount	Zhaga holder	TALEXXmodule SLE LED
	<input checked="" type="checkbox"/>	Gen6 10mm R ADV

LPF4768-ZHP



Tridonic LED Pin Fin cooler
ø47mm - h68mm - Rth 3.9°C/W
Cooling performance 600 - 2,200 lm

Direct mount	Zhaga holder	TALEXXmodule SLE LED
<input checked="" type="checkbox"/>	<input checked="" type="checkbox"/>	Gen1 SUNSET 11mm EXC
<input checked="" type="checkbox"/>	<input checked="" type="checkbox"/>	Gen6 10mm R ADV
<input checked="" type="checkbox"/>	<input checked="" type="checkbox"/>	Gen6 15mm X ADV, SNC, Tinge, FASHION
<input checked="" type="checkbox"/>		Gen6 15mm H ADV

LPF6050-ZHC



Tridonic LED Pin Fin cooler
ø60mm - h50mm - Rth 4.0°C/W
Cooling performance 500 - 1,700 lm

Direct mount	Zhaga holder	TALEXXmodule SLE LED
<input checked="" type="checkbox"/>	<input checked="" type="checkbox"/>	Gen1 SUNSET 11mm EXC
<input checked="" type="checkbox"/>	<input checked="" type="checkbox"/>	Gen6 10mm R ADV
<input checked="" type="checkbox"/>	<input checked="" type="checkbox"/>	Gen6 15mm X ADV, SNC, Tinge, FASHION
<input checked="" type="checkbox"/>		Gen6 15mm H ADV
<input checked="" type="checkbox"/>		Gen6 17mm FASHION D50
<input checked="" type="checkbox"/>	<input checked="" type="checkbox"/>	Gen6 17mm FASHION

LPF6768-ZHP



Tridonic LED Pin Fin cooler
ø67mm - h68mm - Rth 2.1°C/W
Cooling performance 1,100 - 3,300 lm

Direct mount	Zhaga holder	TALEXXmodule SLE LED
<input checked="" type="checkbox"/>	<input checked="" type="checkbox"/>	Gen1 SUNSET 11mm, 15mm EXC
<input checked="" type="checkbox"/>	<input checked="" type="checkbox"/>	Gen6 10mm R ADV
<input checked="" type="checkbox"/>	<input checked="" type="checkbox"/>	Gen6 15mm X ADV, SNC, Tinge, FASHION
<input checked="" type="checkbox"/>		Gen6 15mm H ADV
<input checked="" type="checkbox"/>		Gen6 17mm H ADV D50
<input checked="" type="checkbox"/>	<input checked="" type="checkbox"/>	Gen6 17mm SNC, Tinge
<input checked="" type="checkbox"/>		Gen6 19mm X ADV, FOOD, FASHION, ART
<input checked="" type="checkbox"/>		Gen6 23mm X ADV, FOOD, FASHION, ART

LPF8050-ZHC



Tridonic LED Pin Fin cooler
ø80mm - h50mm - Rth 2.34°C/W
Cooling performance 1,000 - 3,000 lm

Direct mount	Zhaga holder	TALEXXmodule SLE LED
<input checked="" type="checkbox"/>		Gen6 15mm H ADV D50
<input checked="" type="checkbox"/>		Gen6 17mm H ADV D50
<input checked="" type="checkbox"/>		Gen6 19mm X ADV, FOOD, FASHION, ART
<input checked="" type="checkbox"/>		Gen6 23mm X ADV. FOOD, FASHION. ART

LPF8668-ZHC



Tridonic LED Pin Fin cooler
ø86mm - h68mm - Rth 1.46°C/W
Cooling performance 1,500 - 4,600 lm

Direct mount	Zhaga holder	TALEXXmodule SLE LED
<input checked="" type="checkbox"/>		Gen6 15mm H ADV D50
<input checked="" type="checkbox"/>		Gen6 17mm H ADV D50
<input checked="" type="checkbox"/>		Gen6 19mm X ADV, FOOD, FASHION, ART
<input checked="" type="checkbox"/>		Gen6 23mm X ADV, FOOD, FASHION, ART

LPF11180-ZHE



Tridonic LED Pin Fin cooler
ø111mm - h80mm - Rth 1.07°C/W
Cooling performance 2,000 - 6,000 lm

Direct mount	Zhaga holder	TALEXXmodule SLE LED
<input checked="" type="checkbox"/>		Gen6 15mm H ADV D50
<input checked="" type="checkbox"/>		Gen6 17mm H ADV D50
<input checked="" type="checkbox"/>		Gen6 19mm X ADV, FOOD, FASHION, ART
<input checked="" type="checkbox"/>		Gen6 23mm X ADV, FOOD, FASHION, ART

ModuLED Pico 4750

Tridonic Modular LED Star cooler
 ø47mm - h50mm - Rth 5.3°C/W
 Cooling performance 400 - 1,400 lm



Direct mount	Zhaga holder	TALEXxmodule SLE LED
✓	✓	Gen6 10mm R ADV
✓	✓	Gen6 15mm X ADV, SNC, Tinge, FASHION
		Gen6 15mm H ADV, H ADV D50

ModuLED Pico 4780

Tridonic Modular LED Star cooler
 ø47mm - h80mm - Rth 4.2°C/W
 Cooling performance 600 - 1,800 lm



Direct mount	Zhaga holder	TALEXxmodule SLE LED
✓	✓	Gen1 SUNSET 11mm EXC
✓	✓	Gen6 10mm R ADV
✓	✓	Gen6 15mm X ADV, SNC, Tinge, FASHION
✓	✓	Gen6 15mm H ADV, H ADV D50

ModuLED Nano 7050

Tridonic Modular LED Star cooler
 ø70mm - h50mm - Rth 2.2°C/W
 Cooling performance 1,000 - 3,100 lm



Direct mount	Zhaga holder	TALEXxmodule SLE LED
✓	✓	Gen1 SUNSET 11mm, 15mm EXC
✓	✓	Gen6 10mm R ADV
✓	✓	Gen6 15mm X ADV, SNC, Tinge, FASHION
✓	✓	Gen6 15mm H ADV, H ADV D50
✓	✓	Gen6 17mm H ADV D50, FASHION D50
✓	✓	Gen6 17mm SNC, Tinge, FASHION
✓	✓	Gen6 19mm X ADV, FOOD, FASHION, ART
✓	✓	Gen6 23mm X ADV, FOOD, FASHION, ART

ModuLED Nano 7080

Tridonic Modular LED Star cooler
 ø70mm - h80mm - Rth 1.8°C/W
 Cooling performance 1,200 - 3,800 lm



Direct mount	Zhaga holder	TALEXxmodule SLE LED
✓	✓	Gen1 SUNSET 11mm, 15mm EXC
✓	✓	Gen6 10mm R ADV
✓	✓	Gen6 15mm X ADV, SNC, Tinge, FASHION
✓	✓	Gen6 15mm H ADV, H ADV D50
✓	✓	Gen6 17mm H ADV D50, FASHION D50
✓	✓	Gen6 17mm SNC, Tinge, FASHION
✓	✓	Gen6 19mm X ADV, FOOD, FASHION, ART
✓	✓	Gen6 23mm X ADV, FOOD, FASHION, ART

ModuLED Micro 8650

Tridonic Modular LED Star cooler
 ø86mm - h50mm - Rth 1.5°C/W
 Cooling performance 1,500 - 4,500 lm



Direct mount	Zhaga holder	TALEXxmodule SLE LED
✓	✓	Gen1 SUNSET 11mm, 15mm EXC
✓	✓	Gen6 10mm R ADV
✓	✓	Gen6 15mm X ADV, SNC, Tinge, FASHION
✓	✓	Gen6 15mm H ADV, H ADV D50
✓	✓	Gen6 17mm H ADV D50, FASHION D50
✓	✓	Gen6 17mm SNC, Tinge, FASHION
✓	✓	Gen6 19mm X ADV, FOOD, FASHION, ART
✓	✓	Gen6 23mm X ADV, FOOD, FASHION, ART

ModuLED Micro 8680

Tridonic Modular LED Star cooler
 ø86mm - h80mm - Rth 1.2°C/W
 Cooling performance 1,800 - 5,500 lm



Direct mount	Zhaga holder	TALEXxmodule SLE LED
✓	✓	Gen1 SUNSET 11mm, 15mm EXC
✓	✓	Gen6 10mm R ADV
✓	✓	Gen6 15mm X ADV, SNC, Tinge, FASHION
✓	✓	Gen6 15mm H ADV, H ADV D50
✓	✓	Gen6 17mm H ADV D50, FASHION D50
✓	✓	Gen6 17mm SNC, Tinge, FASHION
✓	✓	Gen6 19mm X ADV, FOOD, FASHION, ART
✓	✓	Gen6 23mm X ADV, FOOD, FASHION, ART

ModuLED 9950

Tridonic Modular LED Star cooler
 ø99mm - h50mm - Rth 1.34°C/W
 Cooling performance 1,600 - 5,000 lm



Direct mount	Zhaga holder	TALEXxmodule SLE LED
✓		Gen6 15mm H ADV D50
✓		Gen6 17mm H ADV D50
✓		Gen6 19mm X ADV, FOOD, FASHION, ART
✓		Gen6 23mm X ADV, FOOD, FASHION, ART

ModuLED 9980

Tridonic Modular LED Star cooler
 ø99mm - h80mm - Rth 1.02°C/W
 Cooling performance 2,100 - 6,400 lm



Direct mount	Zhaga holder	TALEXxmodule SLE LED
✓		Gen6 17mm H ADV D50
✓		Gen6 19mm X ADV, FOOD, FASHION, ART
✓		Gen6 23mm X ADV, FOOD, FASHION, ART



ModuLED Mega 13420

Tridonic Modular LED Star cooler
ø134mm - h20mm - Rth 1.32°C/W
Cooling performance 1,600 - 5,000 lm

Direct mount	Zhaga holder	TALEXxmodule SLE LED
✓		Gen6 15mm H ADV D50
✓		Gen6 17mm H ADV D50
✓		Gen6 19mm X ADV, FOOD, FASHION, ART
✓		Gen6 23mm X ADV, FOOD, FASHION, ART



ModuLED Mega 13450-HBG

Tridonic High Bay LED cooler with driver connection system
ø134mm - h50mm - Rth 0.88°C/W
Cooling performance 2,400 - 7,300 lm

Direct mount	Zhaga holder	TALEXxmodule SLE LED
✓		Gen6 17mm H ADV D50
✓		Gen6 19mm X ADV, FOOD, FASHION, ART
✓		Gen6 23mm X ADV, FOOD, FASHION, ART



ModuLED Mega 134100-HBG

Tridonic High Bay LED cooler with driver connection system
ø134mm - h100mm - Rth 0.67°C/W
Cooling performance 3,300 - 10,000 lm

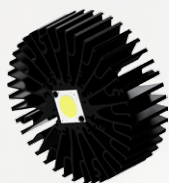
Direct mount	Zhaga holder	TALEXxmodule SLE LED
✓		Gen6 17mm H ADV D50
✓		Gen6 19mm X ADV, FOOD, FASHION, ART
✓		Gen6 23mm X ADV, FOOD, FASHION, ART



ModuLED Giga 15220

Tridonic Modular LED Star cooler
ø152mm - h20mm - Rth 1.13°C/W
Cooling performance 2,000 - 6,000 lm

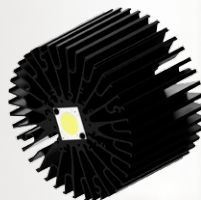
Direct mount	Zhaga holder	TALEXxmodule SLE LED
✓		Gen6 17mm H ADV D50
✓		Gen6 19mm X ADV, FOOD, FASHION, ART



ModuLED Giga 15250

Tridonic Modular LED Star cooler
ø152mm - h50mm - Rth 0.7°C/W
Cooling performance 3,000 - 9,000 lm

Direct mount	Zhaga holder	TALEXxmodule SLE LED
✓		Gen6 17mm H ADV D50
✓		Gen6 19mm X ADV, FOOD, FASHION, ART
✓		Gen6 23mm X ADV, FOOD, FASHION, ART



ModuLED Giga 152100-HBG

Tridonic High Bay LED cooler with driver connection system
ø152mm - h100mm - Rth 0.52°C/W
Cooling performance 8,000 - 14,000 lm

Direct mount	Zhaga holder	TALEXxmodule SLE LED
✓		Gen6 19mm X ADV, FOOD, FASHION, ART
✓		Gen6 23mm X ADV, FOOD, FASHION, ART



IceLED 550

Tridonic Modular Active LED cooler
ø99mm - h55mm - Rth 0.46°C/W
Cooling performance 4,200 - 12,800 lm

Direct mount	Zhaga holder	TALEXxmodule SLE LED
✓	✓	Gen5 15mm EXC, ADV Gen5 23mm EXC, ADV



IceLED Ultra

Tridonic Modular Active LED cooler
ø99mm - h75mm - Rth 0.25°C/W
Cooling performance 5,000 - 20,000 lm

Direct mount	Zhaga holder	TALEXxmodule SLE LED
✓		Gen5 23mm EXC, ADV

Your local distributor:

OUR PROCESS STARTS WITH LISTENING



No.818, Dashun 2nd Rd., Sanmin Dist.
Tel: +886-7-3815892
led@mechatronix-asia.com

Kaohsiung City 80787 Taiwan
Fax: +886-7-3839293
www.led-heatsink.com