

Trusted outdoor solutions

SIDEREA

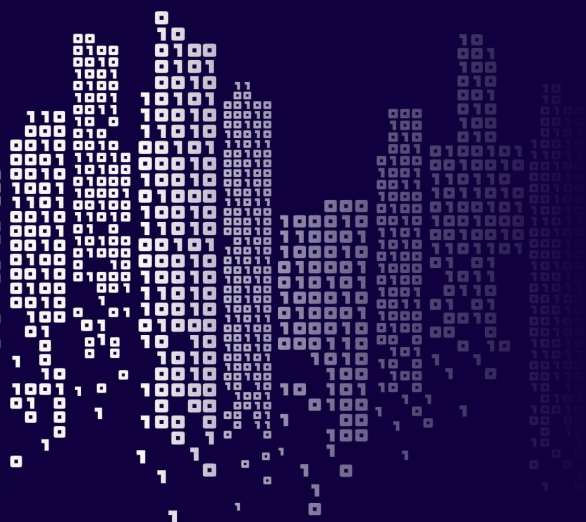
Citizen-Centric Lighting



TRIDONIC

Light that feels the pulse of the city ...





... and follows its rhythm.

Citizen-Centric Lighting

Urbanisation. Climate change. Reputation. And at the centre of all this: citizens. Our society follows a rapid rhythm. Cities and communities must adapt to this in order to remain appealing to residents, visitors and entrepreneurs. A modern infrastructure that offers people security and promotes their well-being while simultaneously reducing a city's ecological footprint is an essential step towards a smart future.

Tridonic is familiar with the needs both of urban environments and the lighting industry. The SIDEREA range from Tridonic is ideal for citizen-centric outdoor lighting that uses smart technologies to optimise asset management and provide the perfect answer for every lighting application. New standards such as Zhaga book 18 and D4i form the basis for future-proof, flexible and open systems and straightforward integration.

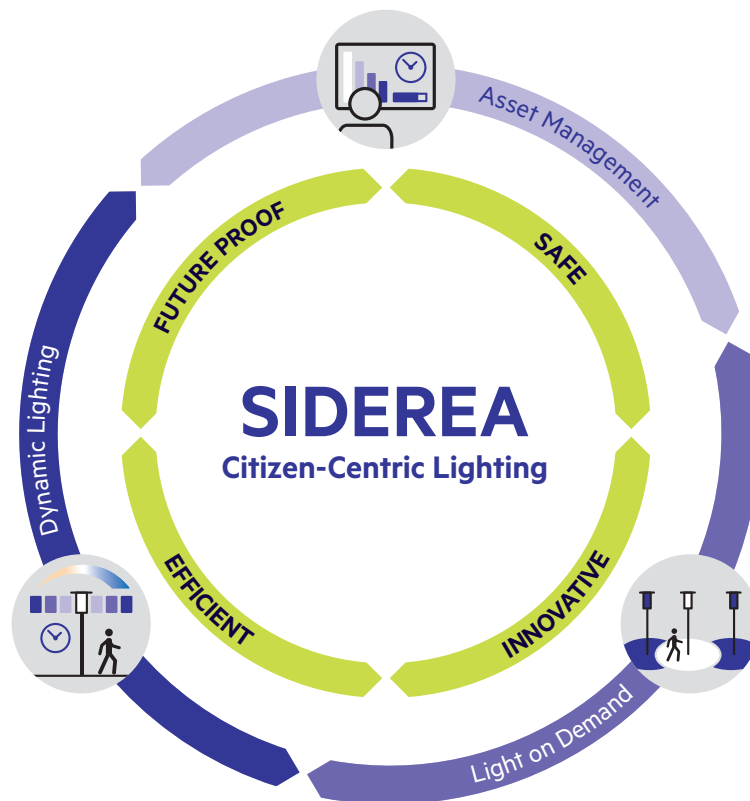


Reliable in any situation:

The SIDEREA range offers maximum protection for all lighting components and increases safety on all outdoor applications such as paths, squares and streets.

Digital cities and communities

Standardisation that delivers safety and flexibility



Future proof

Luminaires with standardised interfaces and the latest communication protocols are fully ready for a future with a wide range of as-yet unknown tasks. The required sensors and communication modules are activated simply via Plug & Play. The luminaire already features the intelligence and sensor technology required for the application at hand.

Safe

High-quality lighting solution components ensure reliable operation, something Tridonic has demonstrated in even the toughest environmental conditions within industry. The risk of system failure is therefore much lower, which in turn increases the safety of the people in cities and communities.

Innovative

Tridonic's many years of experience plus dialogue with visionaries and experts in lighting technology enable the company to develop innovative use cases. This helps cities and communities on their way to becoming "digital cities".

Efficient

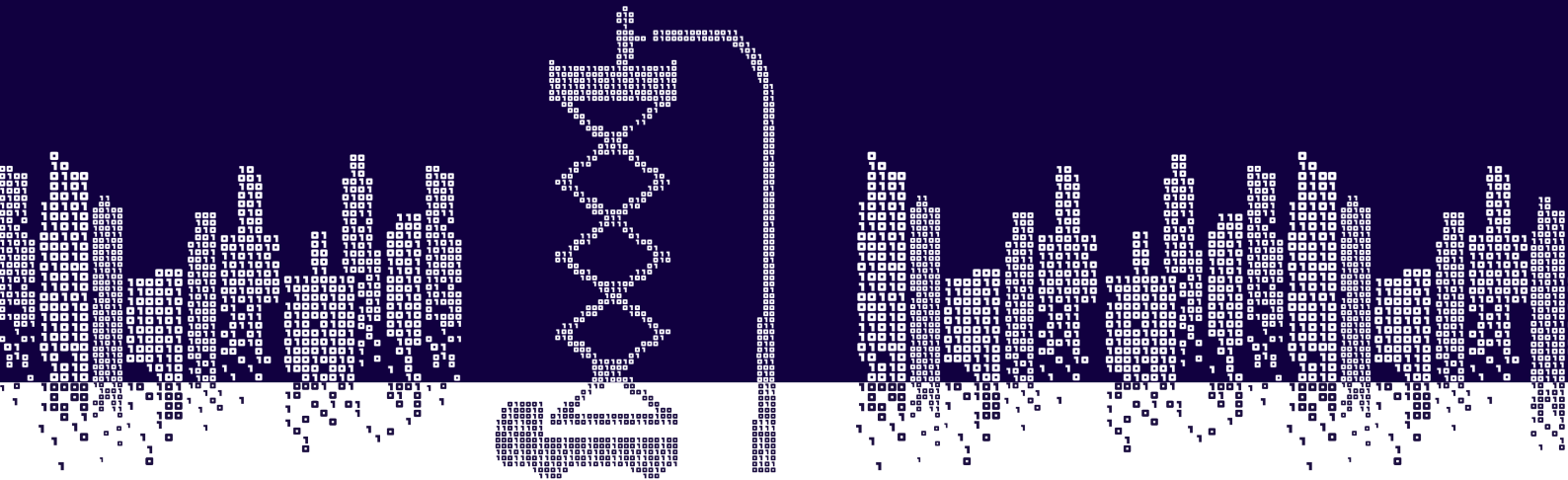
The clever functions offered by the system components deliver enormous potential for reducing energy and maintenance costs. Extremely flexible and easy to use, they guarantee that resources within asset management can be developed truly efficient.



The Zhaga interface provides a safe and future-proof interface for outdoor lighting – like USB used to, it allows system extensions to be connected via Plug & Play. D4i is a standard created by the lighting industry to supply and exchange data with higher-level systems.

Asset Management

Monitoring and controlling luminaires in real time



Within cities and communities, lighting is one of the major cost factors. Proactive support offering better monitoring and short response times can change all that. Errors that are precisely located and diagnosed can be rectified for less. Real-time data on the remaining life time makes it possible to plan the replacement of individual components in advance. Ongoing monitoring that flags unexpected events such as fluctuations in consumption data provides further potential for optimisation. Digitalisation therefore makes management easier, plus the proportion of the budget saved in day-to-day operation is available for investments in the future.



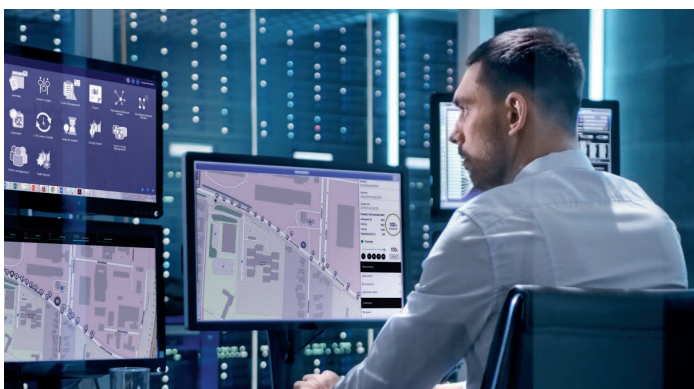
Operation and maintenance

- Planning of maintenance and replacement cycles
- Monitoring of energy needs
- Simple commissioning
- Real-time status information



Data transfer

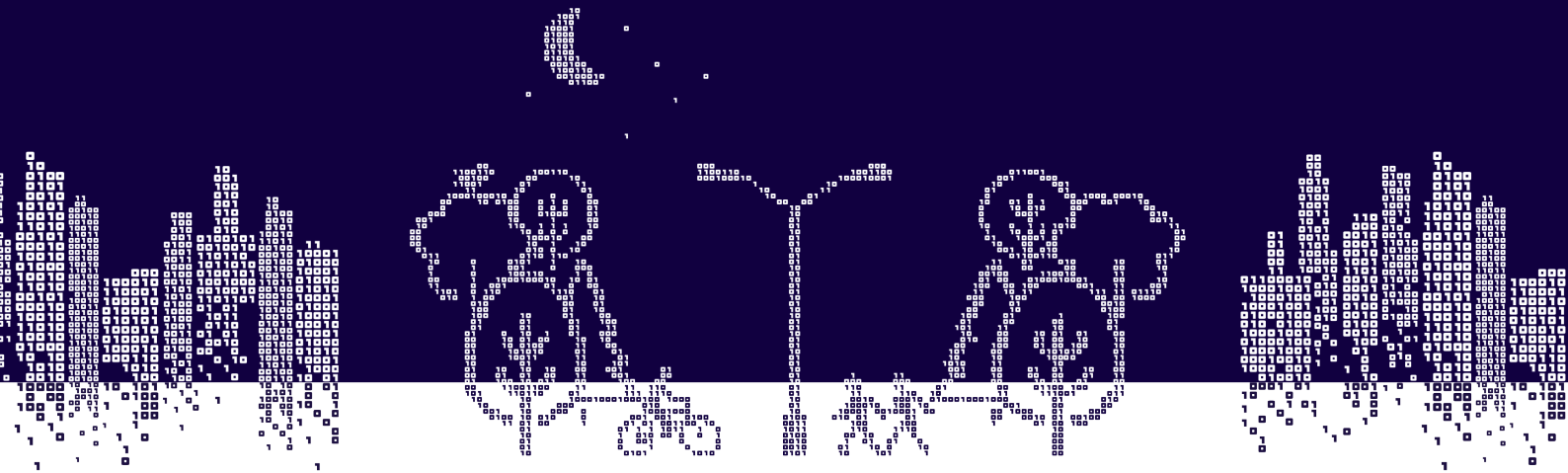
- For error management and diagnostics
- To create energy consumption reports



A built-in interface helps to draw together data from the entire system and facilitates clear presentation.

Light on Demand

Minimising energy consumption and light pollution



An ever-increasing number of people are actively calling for the environment to be protected and long for “green cities”. Cities and communities are also faced with the challenge of implementing the Sustainable Development Goals set by the United Nations by the year 2030. When it comes to lighting, the solution lies in providing the right amount of light only when and where it is needed. That’s why SIDEREA enables the integration of motion sensors so that the illuminance can be automatically adjusted to the road users present. The result? Increased safety on the streets with a simultaneous reduction in energy consumption. Not only do known quiet periods at night help to save costs; they also minimise the amount of light pollution, meaning both people and animals benefit from minimal disturbance at night.



Adaptive light intensity

- Daylight-linked dimming/brightening
- Situation-based on/off/dimming
- Adjustment based on motion



Many paths and squares are used only sporadically during twilight and after dark, yet lighting is a key safety factor. Light is proven to reduce the number of criminal attacks. The solution is to dim luminaires to, for example, 10% when the paths are not in use. This reduces energy consumption and pollution without jeopardising the safety of residents through a complete shutdown of the luminaires.

Dynamic Lighting

Drawing attention and channelling emotion



The benefits of adapting colour temperatures outdoors are threefold: Luminaires with Tunable White technology provide biological support to the natural human day-night cycle. To give an example: Cooler colour temperatures in the morning provide stimulation, while warm-white light in the evening has a relaxing effect. On an emotional level, colourdynamic lighting solutions have the potential to promote interaction and enliven public spaces. For instance, a warm light colour that gives a city and its architecture a charming ambience during the evening can be brightened during the early-evening rush hour to encourage a fast and safe flow of traffic. Not least, the appropriate light colour is also a matter of cultural differences. Tunable White solutions enable adaptation to the preferences of the citizens.



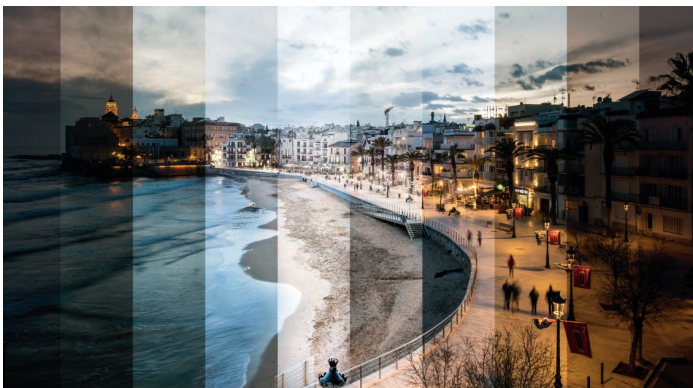
Tunable White

- Lighting with a circadian rhythm
- Switch colour temperature according to the time and situation
- Dim-to-Warm
- Dim-to-Cool

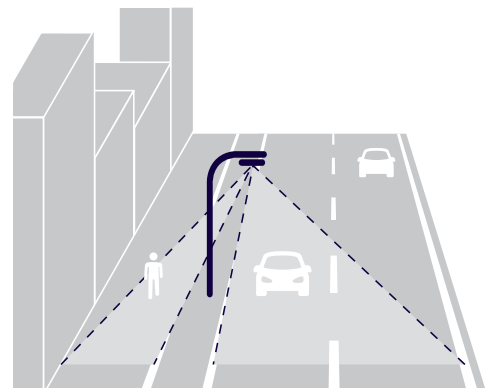


Adaptive light distribution

- Illuminate zones correctly for the application
- Change the proportion of direct/indirect light



Colour temperatures that adapt to the situation really help people to feel good within a city and enjoy spending time in outdoor areas.



For optimum safety, roadways and walkways are lit individually or separately. SIDEREIA provides the opportunity for individual illumination.

Trusted Outdoor Solution

Creating urban value with intelligent lighting

The name Tridonic is a guarantee of wide-ranging expertise throughout the entire outdoor range – from LED modules and LED drivers to sensors. Customers are provided with optimum support through a whole host of services. The intensive, diverse technology partnerships ultimately benefit perfect luminaire and system quality.

Added value for successful customer relations

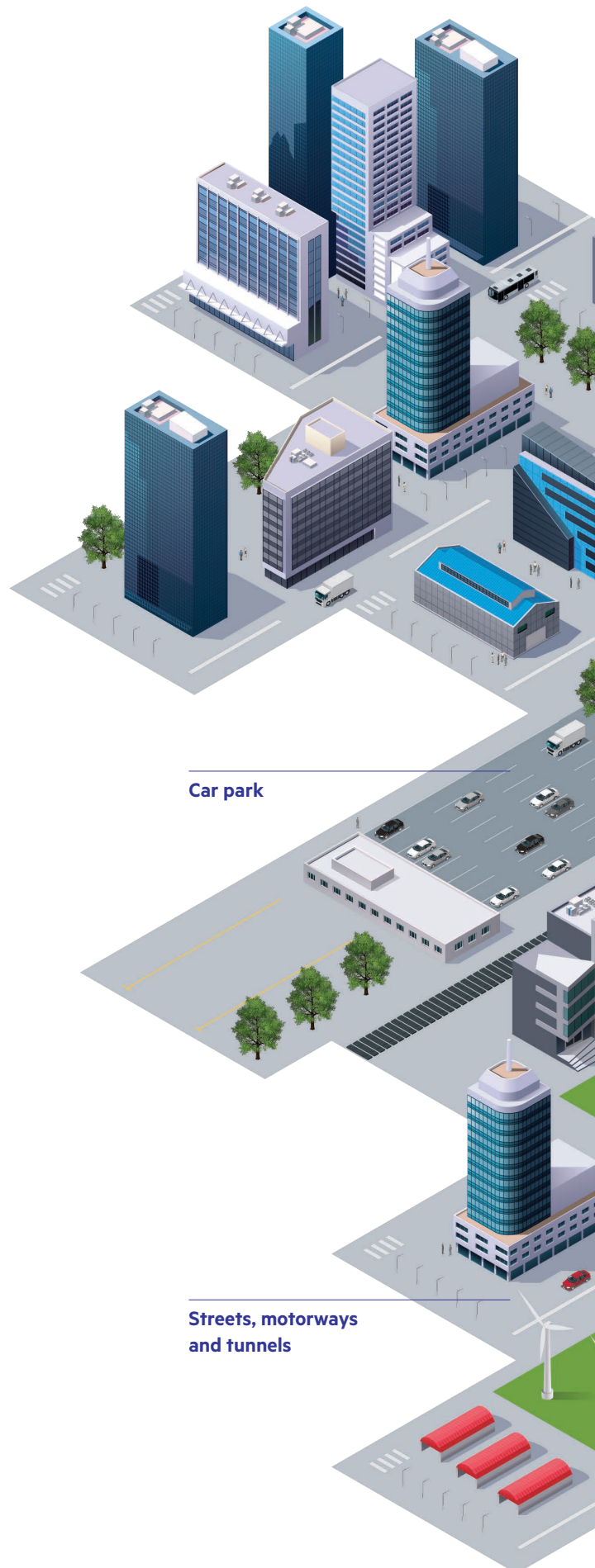
- More than 60 years of expertise within lighting and sensors
- Future-proof, standardised components for IoT networks and smart city platforms
- Competitive position through simple installation.
Better system monitoring and maintenance, and thus optimisation of the total cost of ownership.
- Tried-and-tested services such as design-in support for luminaires

Added value at product level

- Maximum quality standards
- Protection of sensitive sensors against overvoltage caused by lightning or mains transients up to 10 kV
- Industry leader in overheating protection
- Flicker-free light for optimum visual conditions

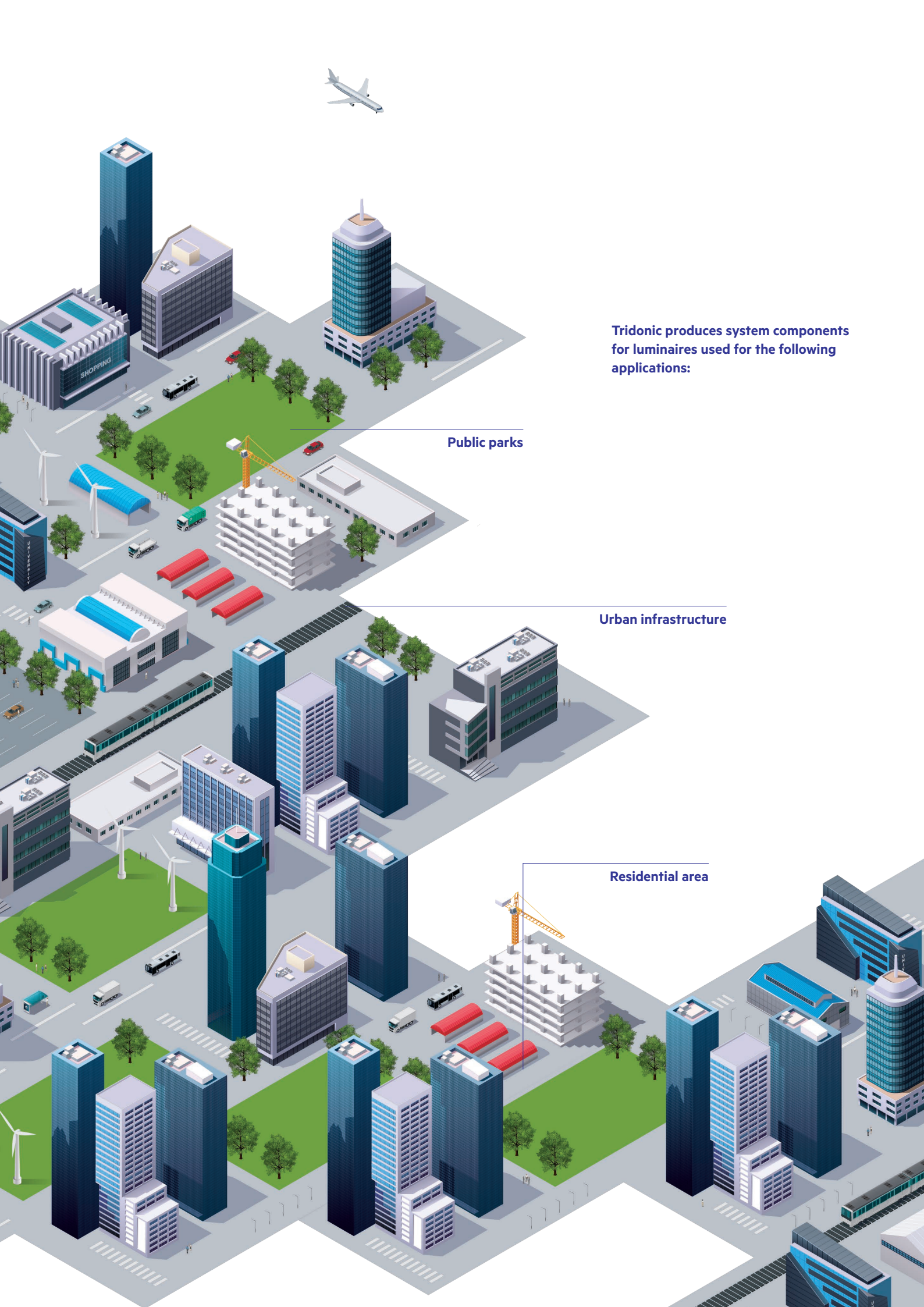
Added value at system level

- Simple integration of luminaires and sensors into a digital network
- Remote maintenance
- Analysis of energy, system and street usage
- Data exchange for integrated, optimised control
- Efficient use of resources through system feedback, maintenance forecasts and data on infrastructure usage



Car park

Streets, motorways
and tunnels



Tridonic produces system components
for luminaires used for the following
applications:

Public parks

Urban infrastructure

Residential area

Outdoor lighting solution with system

From the intelligent luminaire to the urban network



RF Multimaster Controller

Thanks to D4i and Zhaga compatibility, the new remote communication module is ushering in a new era of lighting control and data transfer. Each RF node is extremely intelligent in order to control multiple DALI devices while simultaneously setting up a stable wireless network. A practical approach: RF nodes span distances of up to 100 metres and network with each other. This ensures a reliable exchange of data – even if the gateway fails.



Outdoor driver PRE 3

The first drivers designed according to the new D4i standard make it easy to integrate luminaires into IoT networks. D4i standardises how data is stored, transported and processed in DALI-2 drivers. It also determines how a driver with an integrated DALI bus connection can supply other devices with power. The AUX 24 V power supply has also been standardised for control devices with higher electricity requirements (wireless).



PIR Streetlight Sensor

Specially designed for street lighting, the multisensor has two PIR elements with asymmetric lenses for an extremely wide detection range. Detection of two separate zones is also possible, such as walkways and cycle paths.



With D4i, the Digital Illumination Interface Alliance (DiiA) is defining a new standard for the DALI bus within the luminaire.



DALI part 250
Bus power supply



DALI part 251
Asset management



DALI part 252
Energy usage



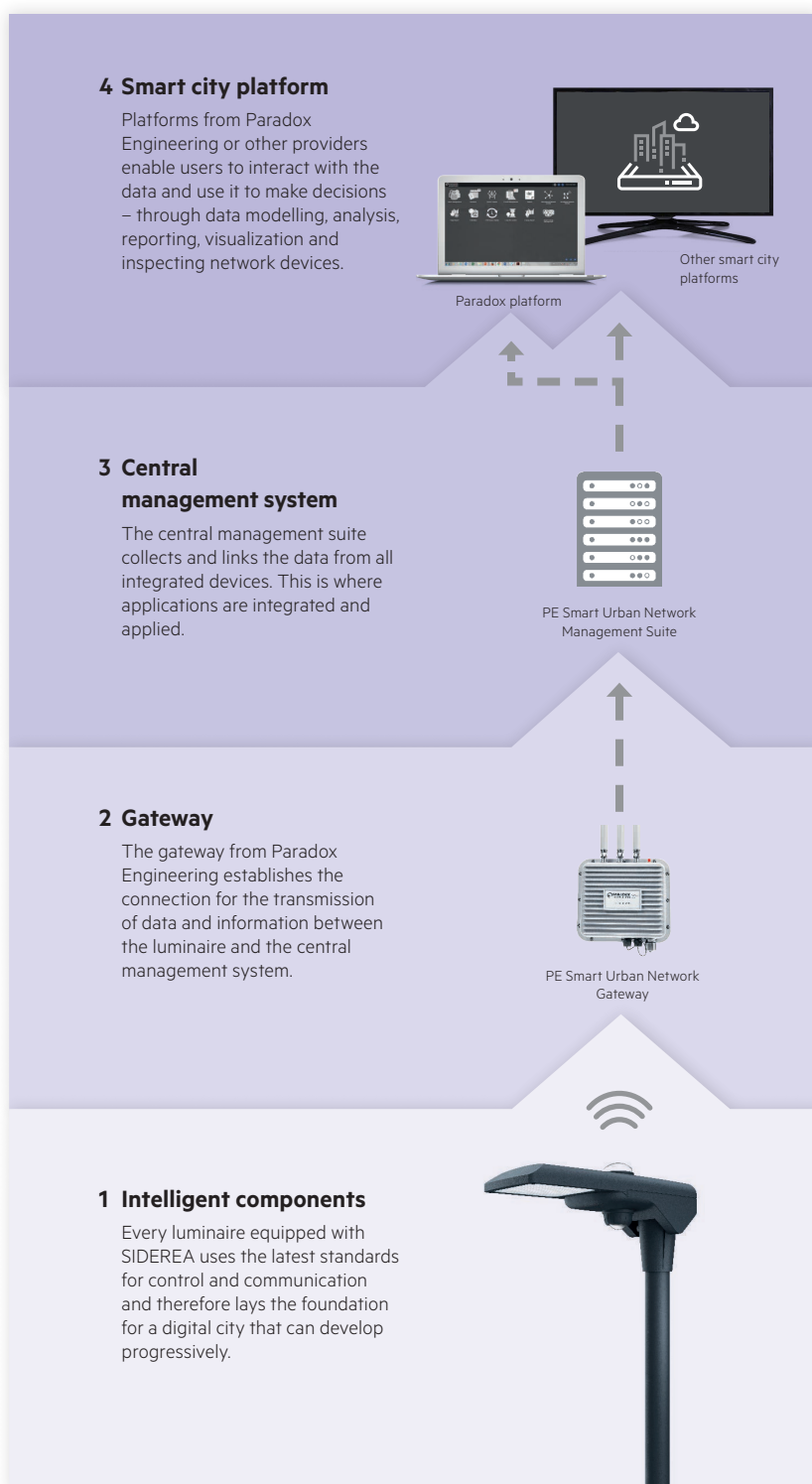
DALI part 253
Diagnostic



AUX power
supply

Strategic partnership with Paradox Engineering

Fully integrated solution based on open standards



PE Smart Urban Network from Paradox Engineering

A wireless network and a central management system remotely monitor IoT applications such as street lighting and car parks as well as high-speed services such as video monitoring and WiFi hotspots. Based on standards and open data models, PE Smart Urban Network enables complete interoperability in the management of devices, data and applications. When it comes to future extensions and integrating additional applications, the possibilities are limitless. The embedded blockchain technology optimises security and enables innovative models for data monetisation.



The benefits of the PE Smart Urban Network

- Manufacturer-independent central management system
- Seamless integration of customer-specific systems and applications
- Guaranteed, continuous further development
- Active member of the uCIFI Alliance for open, multi-manufacturer, fully compatible, wireless communication of smart cities and smart supply companies.

Close light

We attach great importance to a strong international presence – this allows us to stay sufficiently close to our customers

AUSTRALIA

Tridonic Australia Pty Ltd
2/7 Millner Ave
Horsley Park, NSW 2175
Australia
T +61 2 9832 6600
F +61 2 9832 6688
www.tridonic.com
infoau@tridonic.com

AUSTRIA

Tridonic GmbH & Co KG
(Headquarters)
Färbergasse 15
6851 Dornbirn, Austria
T +43 5572 395-0
F +43 5572 20176
www.tridonic.com
sales@tridonic.com

Tridonic GmbH & Co KG
Sales Austria
Archenweg 58
6022 Innsbruck, Austria
T +43 512 3321 554
F +43 512 3321 995554
www.tridonic.com
vertrieb.austria@tridonic.com

CHINA

Tridonic (Shanghai) Co., Ltd.
(Headquarters)
Room 602, Building B
Zhongshan International Plaza
No. 789 Tianshan Road
Shanghai, 200335, China
T +86 21 52400 599
F +86 21 52400 230
www.tridonic.com
china@tridonic.com

Tridonic (Shanghai) Co., Ltd.
Beijing Branch
Room 1207, No. 3, Yard 1
Tian Xin Street,
Fang Shan District
Beijing, 102446, China
T +86 10 6522 6163
F +86 10 6522 7003
www.tridonic.com
china@tridonic.com

Tridonic (Shanghai) Co., Ltd.
Guangzhou Branch
Room 505, R & F Profit Plaza
76 Huangpu Xi Road, Tianhe District
Guangzhou, 510623, China
T +86 20 3839 2483
F +86 20 3839 2482
www.tridonic.com
china@tridonic.com

FRANCE

Tridonic France SARL
8 Rue de Bruxelles
ZI Krafft
67150 Erstein, France
T +33 3 88 59 62 70
F +33 3 88 59 62 75
www.tridonic.fr
info.france@tridonic.com

GERMANY

Tridonic Deutschland GmbH
Edisonallee 1
89231 Neu-Ulm
Germany
T +49 731 176629-0
F +49 731 176629-15
www.tridonic.de
vertrieb.deutschland@tridonic.com

ITALY

Tridonic Italia srl
Viale della Navigazione
Interni, 115
35027 Noventa Padovana
Italy
T +39 049 89 45 127
F +39 049 87 04 715
www.tridonic.it
vendite.italia@tridonic.com

KOREA

Tridonic Korea LLC
Lee Seok-Jun
#808 HanHwa BizMetro II
551-24 Yangcheon-ro
Gangseo-gu Seoul
Republic of Korea (South)
T +82 (2) 2013 8051
T +82 10 2230 2221
www.tridonic.kr
seokjun.lee@tridonic.com

MALAYSIA

Tridonic Malaysia Sdn Bhd
V03-10-01 Designer Office,
Lingkaran SV,
Sunway Velocity, Cheras
55100 Kuala Lumpur
Malaysia
T +60 3 2733 6484
T +60 3 2733 6485
www.tridonic.com
asean@tridonic.com

MIDDLE EAST

Tridonic Middle East (FZE)
Warehouse LB 4 Blue Shed Area,
JAFZA North, Jebel Ali
P.O. Box 17972
Dubai, United Arab Emirates
T +971 4 8833 664
F +971 4 8833 665
www.tridonic.ae
sales.middleeast@tridonic.com

NEW ZEALAND

Tridonic New Zealand
PO Box 71134, Rosebank
Auckland 1348
27 Jomac Place, Avondale
Auckland 1026
T +64 9820 1119
F +64 9820 4471
www.tridonic.com
sales@tridonic.co.nz

POLAND

Tridonic Rep. Office Poland
Poland
www.tridonic.com
marek.michalski@tridonic.com

PORTUGAL

Tridonic Portugal, Unipessoal Lda.
Rotunda Engenheiro
Edgar Cardoso, 23, piso 8
Vila Nova de Gaia 4400-676
Portugal
T +351 938 448 467
www.tridonic.com
ventas@tridonic.com

SINGAPORE

Tridonic S. E. A. Pte Ltd
158 Kallang Way
#06-02
349245 Singapore
Singapore
T +65 6749 9071
F +65 6293 3700
www.tridonic.com
asean@tridonic.com

SOUTH AFRICA

Tridonic SA (Pty) Ltd
Unit A7, Centurion Business Park
Cnr. Bosmansdam Road &
Democracy Way
Milnerton, SA, 7441
South Africa
T +27 21 110 5687
www.tridonic.com
info@tridonic.com

SPAIN

Tridonic Iberia, S.L.
Calle Carpinteros nº 8, 2a
28670 Villaviciosa de Odón
Spain
T +34 916 162 095
www.tridonic.es
ventas@tridonic.com

SWITZERLAND

Tridonic AG
Obere Allmeind 2
8755 Ennenda
Switzerland
T +41 55 645 4747
www.tridonic.ch
vertrieb.schweiz@tridonic.com

TURKEY

Tridonic Aydınlatma TİC.LTD. ŞTİ.
Kemankeş Mah., Necatibey cad.
Akçe Sok., Akçe Han 10
34420 Karaköy / Beyoğlu
İstanbul, Turkey
T +90 212 244 78 05
F +90 212 244 78 06
www.tridonic.com
satis@tridonic.com

UNITED KINGDOM

Tridonic UK Limited
Unit 7 Lindenwood
Chineham Business Park
Crockford Lane, Chineham
RG24 8LB Basingstoke
Hampshire
United Kingdom
T +44 1256 374300
www.tridonic.com
enquiries.uk@tridonic.com

USA

Tridonic Inc. USA
3300 Route 9W
Highland, NY 12528
United States
www.tridonic.us
sales.us@tridonic.com

Headquarters

Tridonic GmbH & Co KG
Färbergasse 15 | 6851 Dornbirn, Austria
T +43 5572 395-0 | F +43 5572 20176
www.tridonic.com | sales@tridonic.com

Light you want to follow

