

Release Notes Software x-touch Platform V3.xx

This manual shows the history of the officially released x-touch platform software versions. The manual describes solved software-bugs and the new features implemented in the x-touchPANEL and x-touchBOX. It gives a short overview about the features and shows how to activate or operate them.

Release Note Software x-touch Platform V3.05:

Solved software-bugs:

- ❑ Corrections in the Turkish and Hungarian language

Release Note Software x-touch Platform V3.02:

New software-features:

- ❑ Plug-Mode

Solved software-bugs:

- ❑ Corrections in the Polish translation
- ❑ Corrections in the Swedish translation
- ❑ Corrected calculation of RGB to DALI

Release Note Software x-touch Platform V3.00:

Software-changes:

- ❑ New button desing in the scheduler window
- ❑ In colour mode the dim-buttons only control the white light
- ❑ Locking all configuration-windows with the configuration lock
- ❑ Operating PCI FOX and DALI-Somfy Animeo Interface
- ❑ Deactivating the touchscreen for cleaning

New software-features:

- ❑ Up-/download via Ethernet (x-touchPANEL only)
- ❑ Colour scene
- ❑ Password editor
- ❑ Configurable scene- and dim-buttons
- ❑ Power-up settings
- ❑ Frame-light and display-light settings

Solved software-bugs:

- ❑ No major bugs reported

A detailed description of the software-changes and the new software-features can be found in the operation manual, available on the homepage of Tridonic (www.tridonic.com).

Release Note Software x-touch Platform V3.05:

Solved software-bugs:

Corrections in the Turkish and Hungarian language:

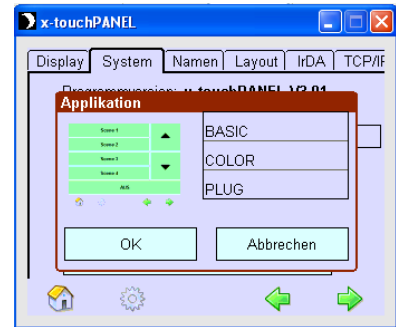
Turkish and Hungarian language settings have not been saved. After the next power-up the system has been reset to German.

Release Note Software x-touch Platform V3.02:

Plug Mode

With the software version 3.02 it is possible to select a 3rd operation mode. With the plug mode it is possible to make small colour-applications in conjunction with the plug-addressing of the PCA-ballasts. The user interface is similar to colour mode if only one colour zone is used.

In this special colour mode the grouping of the ballast is done with the group-plugs of the PCA-EXCEL (no addressing is necessary). So it is very easy to set up a colour application.



Group assignments:

The group assignment is different to the colour mode

Red	=>	group 1 (G0)
Green	=>	group 2 (G1)
Blue	=>	group 3 (G2)
White	=>	group 4 (G3)

Solved software-bugs:

1st bug: Corrections in the Polish translation

2nd bug: Corrections in the Swedish translation (ON and OFF were mixed up)

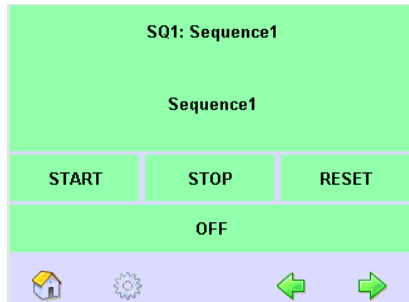
3rd bug: Corrected calculation of RGB to DALI (rounding problems at low values)

Release Note Software x-touch Platform V3.00:

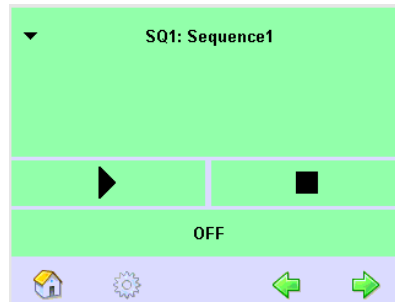
New button design in the scheduler window

In software version 3.00 the design of the scheduler window has slightly changed.

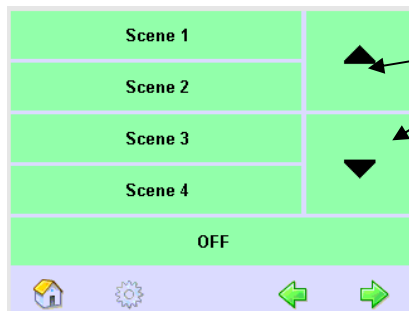
Old window:



New window:



In colour mode the dim-buttons only control the white light



With the two dim-buttons only the groups of the white light can be controlled (groups 1-4).

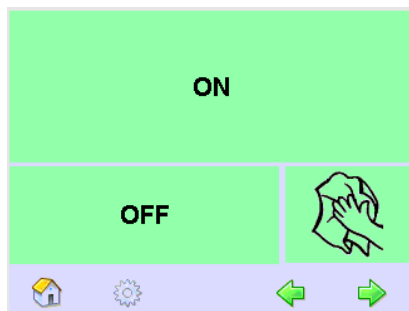
Locking all configuration-windows with the configuration lock

In software version 3.00 it is possible to lock the configuration-windows outside the configuration menu. The configuration windows are locked with the same password as the configuration menu (See operation manual section: 4.9 Password protection).

Operating PCI FOX and DALI-Somfy Animeo Interface

See operation manual section: 5.1 Addressing and grouping

Deactivating the touchscreen for cleaning



In software version 3.00 it is possible to start the screen-cleaning window in the home-menu. Therefore an additional home-menu window was integrated in the software. So it is possible to activate the cleaning function even if the configuration menu is locked.

The commands of the ON- and the OFF-button are configurable (see operation manual section: 7.3 Configuring buttons in the Home menu)

Up-/download via Ethernet (x-touchPANEL only)

In software version V3.00 it is possible to upload and download the configuration of the x-touchPANEL via Ethernet. The configuration file contains information about the configuration of the schedules and the sequences, the names of scenes, groups, schedules and sequences and the display layout. As well it is possible to update the software via Ethernet.

Colour scene



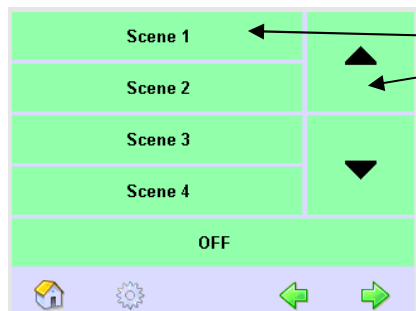
With the new function "Colour Scene" it is possible to set up 8 colour scenes across all zones.

(See operation instruction section: 7.3.3 Configuring the Colour scene button)

Password editor

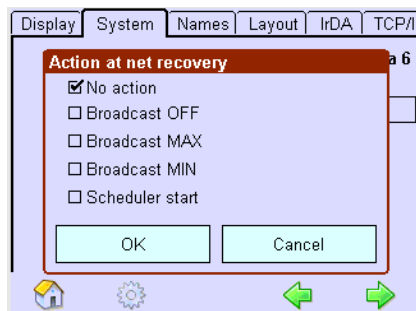
In software version 3.00 it is possible to change the passwords of the password protected areas. (See operation manual section: 4.9 Password protection)

Configurable scene- and dim-buttons



In software version 3.00 the commands of the scene- and the dim-buttons are configurable. (See operation manual section: 7.3 Configuring buttons in the Home menu)

Power-up settings



In the Configuration menu it can be defined how the x-touchBOX/PANEL will behave after a power failure.

The possibilities are:

- No action
- Broadcast OFF
- Broadcast maximum light level
- Broadcast minimum light level
- Restart the scheduler

Frame-light and display-light settings

Change of colour twice a day. (See operation manual section: 4.7 Setting the frame light and display light.)